



SNOW LAKE ENERGY

**Building a Clean Energy
Materials Company**

Disclaimer & Forward-Looking Statements

No securities commission or securities regulatory authority or other regulatory authority has reviewed, passed upon or endorsed the accuracy or adequacy of this document. Any representation to the contrary is unlawful and is expressly disclaimed by Snow Lake Resources Ltd., d/b/a Snow Lake Energy (the “Company”).

The information contained in this presentation does not purport to be all-inclusive or to contain all information that prospective investors may require. Prospective investors are encouraged to conduct their own analysis and reviews of the Company and of the information contained in this presentation. Prospective investors should consult their own professional advisors to assess their potential investment in the Company.

The remarks contained in this presentation (“Presentation”) may contain forward-looking statements relating to the Company’s operations or to its business environment. Such statements are based on the Company’s operations, forecasts, and projections, but are not guarantees of future performance and involve risks and uncertainties that are difficult to predict or control. A number of factors could cause actual outcomes and results to differ materially from those expressed. Although any such forward-looking statements are based upon what management believes to be reasonable assumptions, the Company cannot guarantee that actual results will be consistent with these forward-looking statements. In addition, the Company disclaims any obligation to update or revise any forward-looking statements, for any reason. We also do not commit in any way to guarantee that we will continue reporting on items or issues that arise.

This Presentation has been provided to the recipient for information purposes only and no representation or warranty, express or implied, is made as to the completeness or accuracy of the information contained herein. The contents are not to be reproduced or distributed to the public or press. The information contained herein is not guaranteed as to its accuracy or completeness. Throughout this Presentation various logos and trademarks will be used. These trademarks and logos are the property of their respective owners.

This presentation contains or references to certain market, industry and peer group data which is based upon information from independent industry publications, market research, analyst reports and surveys and other publicly available sources. Although the Company believes these sources to be generally reliable, such information is subject to interpretation and cannot be verified with complete certainty due to limits on the availability and reliability of raw data, the voluntary nature of the data gathering process and other inherent limitations and uncertainties. The Company has not independently verified any of the data from third party sources referred to in this presentation and accordingly, the accuracy and completeness of such data is not guaranteed.

An investment in the Company's securities should be considered highly speculative. There is no guarantee that an investment in the Company will earn any positive return in the short or long term. An investment in the Company is appropriate only for investors who have the capacity to absorb a loss of some or all of their investment. There are certain risk factors associated with an investment in the Company’s securities.

In addition, there are a number of risk factors that could cause future results to differ materially from those described herein. Additional risks and uncertainties, including those that the Company does not know about now or that it currently deems immaterial, may also adversely affect the Company’s business or any investment therein.

01

OVERVIEW



Snow Lake Energy is a clean energy materials company

We are assembling a global portfolio of critical minerals projects designed to supply the materials needed to support the clean energy transition and the EV transition

GLOBAL PORTFOLIO OF CLEAN ENERGY PROJECTS

Lithium Projects



Snow Lake Lithium™ Project

An advanced stage exploration lithium project with an initial mineral resource estimate and a positive preliminary economic assessment



Shatford Lake Lithium Project

An exploration stage lithium project located on the southern boundary of the Tanco lithium mine

Uranium Projects



Engo Valley Uranium Project

An exploration stage uranium project in Namibia, that has not had any exploration since the 1970's, and which hosts known uranium mineralization



Black Lake Uranium Project

An exploration stage uranium project in the Athabasca Basin, with previous exploration in the 1950's and 1970's, and hosting known uranium mineralization

Saskatchewan
Black Lake Uranium Project

Manitoba
Snow Lake Lithium Project

Manitoba
Shatford Lake Lithium Project

Namibia
Engo Valley Uranium Project



KEY MILESTONES & CATALYSTS

Snow Lake Lithium™ Project

Spring 2024

Summer 2024

Fall 2024

Winter 2024

Spring 2025

Summer 2025

Environmental Baseline Data Collection

Environmental Baseline Data Collection

Shatford Lake Lithium Project

Prospecting

Ground Geophysics

Drill Program

Assays

Engo Valley Uranium Project

Ground Geophysics

Phase 1 Drilling

Phase 2 Drilling

Assays

Mineral Resource Estimate

Black Lake Uranium Project

Airborne

Prospecting / Ground Geophysics

Phase 1 Drilling

Phase 2 Drilling

Assays

Mineral Resource Estimate

INVESTMENT HIGHLIGHTS

Global Drivers

Global Thematics

Demand drivers for critical minerals:

- Net Zero
- Energy Security
- Supply Chain Security
- Clean energy transition
- Electric vehicle (EV) transition

Critical Minerals

Critical minerals key to each Global Thematic:

- Uranium for the clean energy transition & net zero
- Lithium for the EV transition

Supply / Demand Fundamentals

- Demand is forecast to outstrip supply for both lithium and uranium over the next decade

Snow Lake Energy

Portfolio of Critical Mineral Projects

- Two lithium projects in Canada
- Two uranium projects, one in Canada and one in Namibia

Premier Mining Jurisdictions

- Saskatchewan and Manitoba are a Tier 1 mining jurisdictions
- Namibia is a stable mining country & the 3rd largest global uranium producer

Mineral Resources

- SK-1300 Measured & Indicated lithium mineral resources at Snow Lake
- Historical uranium resources at both Black Lake and Engo Valley

Exploration Potential

- Lithium exploration potential at Snow Lake and at Shatford Lake
- Uranium exploration potential at Black Lake & Engo Valley

02

ENERGY TRANSITION



ENERGY TRANSITION

Clean energy transition means shifting energy production away from sources that release greenhouse gases, such as fossil fuels, to those that release little to no greenhouse gases

Sources of Clean Energy:

Nuclear power, hydro, wind and solar

Critical Minerals that Power the Clean Energy Transition:

Uranium

Electric vehicle (EV) transition means shifting to electric vehicles and renewable energy, from internal combustion engines (ICE) and fossil fuels

Critical Minerals that Power the EV Transition:

Lithium

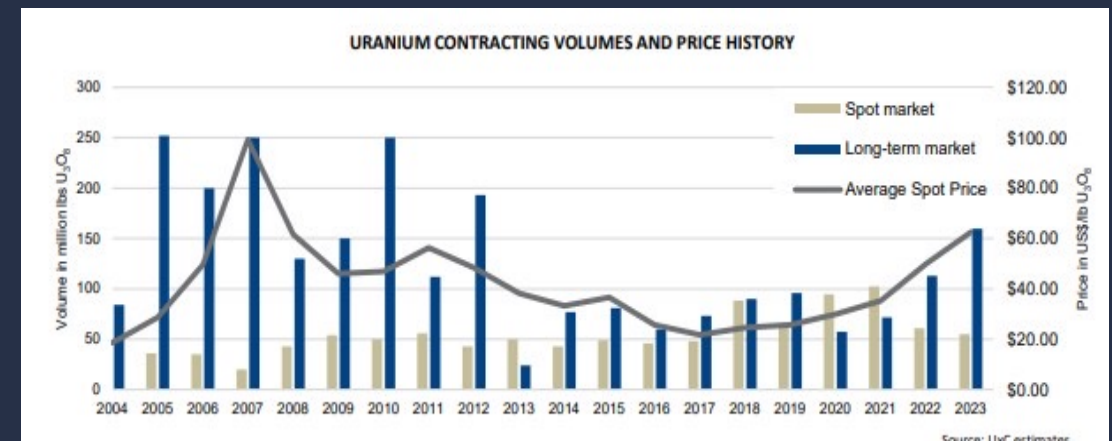
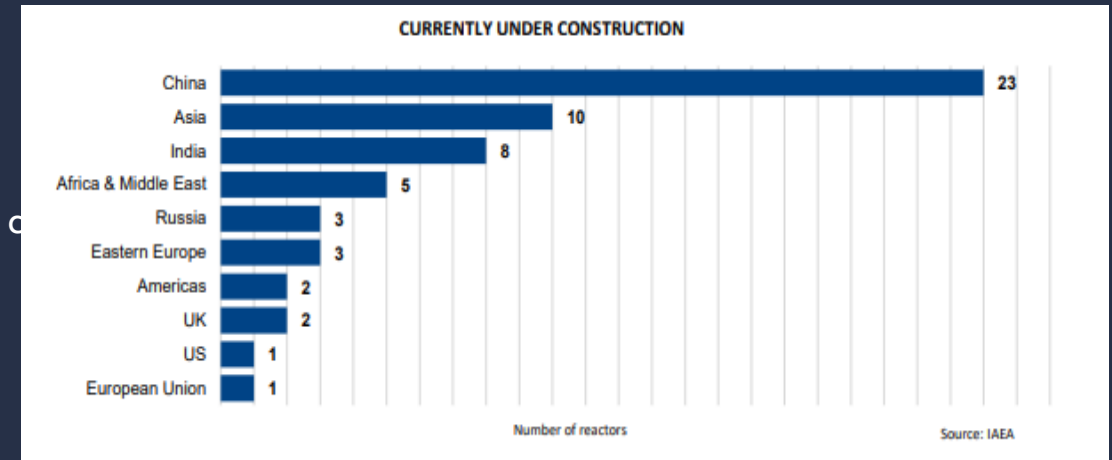
03

MARKET OVERVIEW



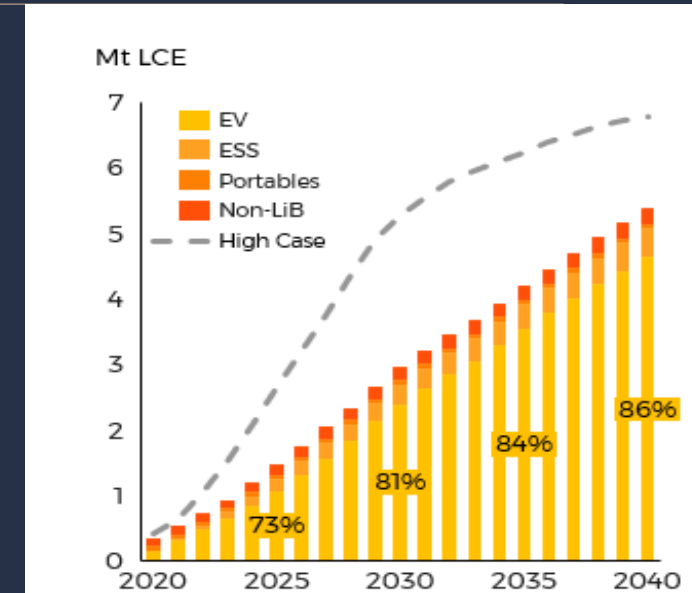
URANIUM

- **Critical Role in the Energy Transition**
 - There is no path to net zero carbon without nuclear
- **Geopolitical Risks Increase Supply Uncertainty**
 - Geopolitical risks in key supplier markets, Russia & Niger, impact supply of uranium
 - Lack of investment in new supply in the last decade
 - Prices rising sharply
- **Global Commitments to Nuclear**
 - COP 28 – 22 countries aim to triple nuclear capacity by 2050
 - Increasing alignment of nuclear power with energy security and affordability
- **Energy Policy Shifting in Favour of Nuclear Energy**
 - Key nations advancing nuclear power programs
 - A total of 61 reactors under construction in 18 countries
 - Commercial small modular reactors under construction
 - Decades of underinvestment during prolonged downturn
 - Demand driven by uncovered uranium requirements
 - Supply response is not forecast to keep up with demand

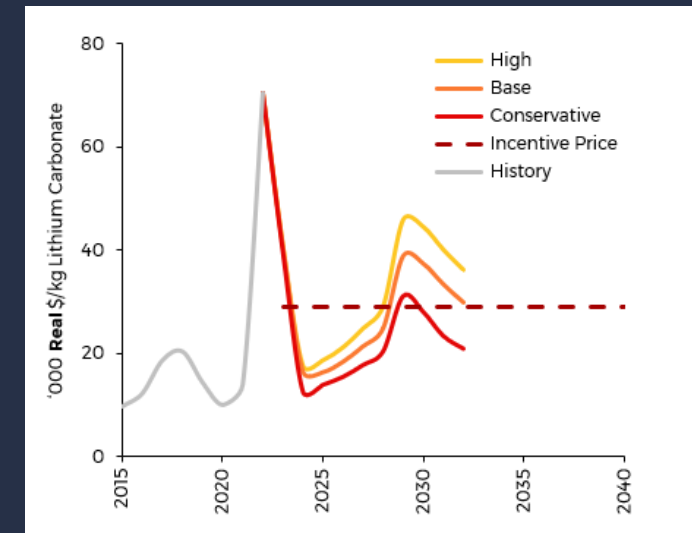


LITHIUM

- **Critical Role in the EV Transition**
 - There is no EV transition without lithium
- **Markets for Lithium**
 - glass and grease, for their thermal resistance at extreme temperatures
 - glass-ceramic stovetops, glass containers, specialty glass and fiberglass
 - lubricating greases for cars and heavy machinery
 - batteries for electronics, electric vehicles and grid storage
 - batteries accounted for 80% of total lithium demand in 2022
- **Production of Lithium**
 - Australia is the global leader in lithium production
 - Australia has 5 lithium mine that account for almost half of global lithium production
 - Chile is the next largest producer, followed by China and Argentina
- **Strong Supply / Demand Fundamentals**
 - EV transition continues in earnest in Asia, more slowly in North America
 - Demand is forecast to outstrip supply over the next decade
 - Supply response continues to lag demand



Global lithium demand by end-use



Annual price forecast for lithium carbonate

04

PROJECT LOCATIONS



SASKATCHEWAN

Tier I Mining Jurisdiction

- Saskatchewan is a Tier I mining jurisdiction

Highest Grade Global Uranium Deposits

- Cigar Lake is the world's highest grade uranium mine

A Long History of Uranium Mining

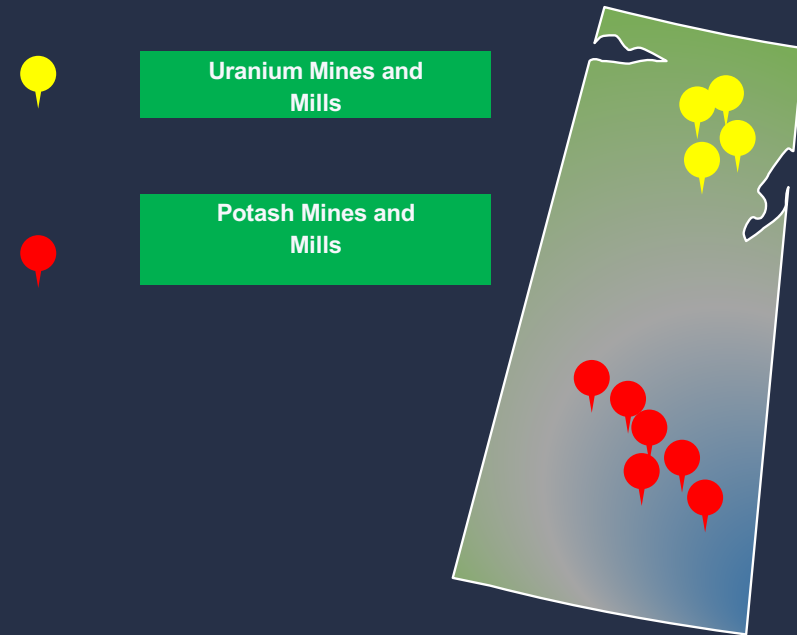
- Saskatchewan is the 2nd largest global uranium producer

Operating Uranium Mines & Mills

- Cigar Lake Mine
- Key Lake Mill
- McArthur River Mine
- McClean Lake Mill

Largest Global Potash Producer

- Saskatchewan is the largest global potash producer
- Nutrien is the world's largest potash company



MANITOBA

A Long History of Lithium Mining:

- Tanco lithium mine has been in continuous production for the past 50 years

Major Current Mining:

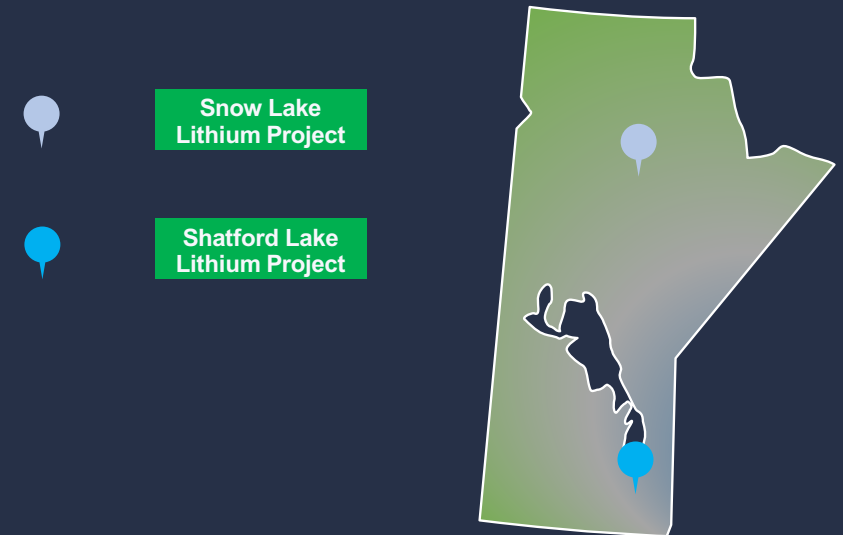
- HudBay operates the Lalor Mine (gold, zinc & copper) near Flin Flon, Manitoba, approximately 15 km west of Snow Lake
- Vale operates the T3 nickel mine near Thompson, approximately 240 km from Snow Lake

Proximity to the United States:

- Manitoba is in the geographical center of North America
- It is a gateway to the United States and to Europe
- CentrePort is North America's largest inland port (air cargo, rail, highway)

ESG Credentials:

- Hydroelectric provides 97% of all power



NAMIBIA

Stable & Mining Friendly

- Stable democracy, independent judiciary, diverse economy
- Transparent system of mineral & surface title
- Political and social support for mining with stated ambitions to develop mineral resources

Well Established Mining Industry

- 120 year mining history
- Mining is Namibia's leading economic sector, accounting for 10% of Namibia's GDP
- Stable tax code and fair fiscal terms

A Long History of Uranium Mining:

- Namibia is currently the 3rd largest global producer of uranium oxide
- The Husab open-pit uranium mine is the 3rd largest uranium mine in the world.
- The Rossing uranium mine is the 5th largest uranium mine in the world
- Namibia also produces zinc, graphite and gold



Snow Lake uranium project



Enjo Valley Uranium Project

Existing Uranium mines



Rossing Uranium Mine



Husab Uranium Mine



Langer Heinrich Uranium Mine

05

URANIUM PROJECTS



ENGO VALLEY URANIUM PROJECT

Overview

- Top tier under-explored uranium project
- Snow Lake holds an initial 68% interest in the Project
- Ability to earn up to 85% interest upon exploration expenditures
- Located on the Skeleton Coast in Northwest Namibia
- 600 km north of Swakopmund
- Last exploration was conducted in the 1970's by Gencor
- Multiple uranium targets identified and sampled
- 5k of historic drilling completed by Gencor

Proposed Work Program

- Review of all historical exploration data and all previous drill results
- Analysis of prior airborne radiometric survey data
- Fresh twin hole diamond drilling of historical drilling
- Grid diamond infill drilling
- Preparation of an initial SK-1300 compliant mineral resource estimate
- Prospecting and geological mapping of additional, previously untested anomalies



06

LITHIUM PROJECTS



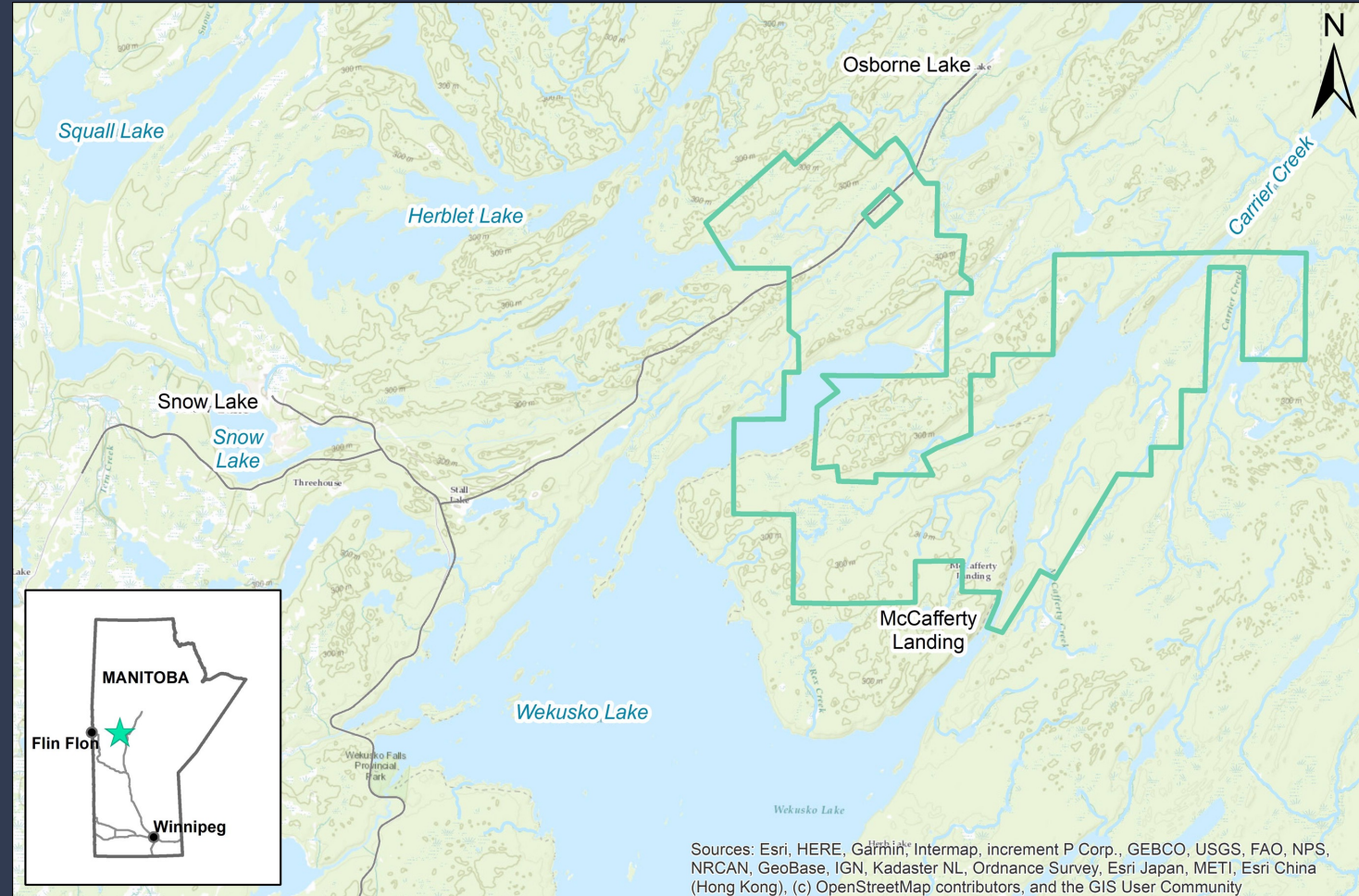
SNOW LAKE LITHIUM PROJECT

Overview:

- 100% owned by Snow Lake
- Consists of 2 Deposits: Thompson Brothers & Grass River
- Thompson Brothers is a vertical, tabular shaped deposit
- Grass River consists of 4 separate pegmatite dykes
- 25,000 m of drilling completed in 2022/2023
- Mineral resource estimate: (8.2MT @ 1% Li₂O)
 - Measured resource: 748,000 tonnes 1.13% Li₂O
 - Indicated resource: 6,560,006 tonnes 1.10% Li₂O
 - Inferred resource: 1,007,119 tonnes 0.99% Li₂O
- 89% of mineral resource in measured and indicated
- Deposits remain open along strike and at depth
- Potential to increase the project's tonnage through a targeted exploration and drilling strategy

Preliminary Economic Assessment:

- Pre-tax NPV of \$1.7 Billion
- Pre-tax IRR of 208%



NEXT PHASE WORK PROGRAM

Drilling

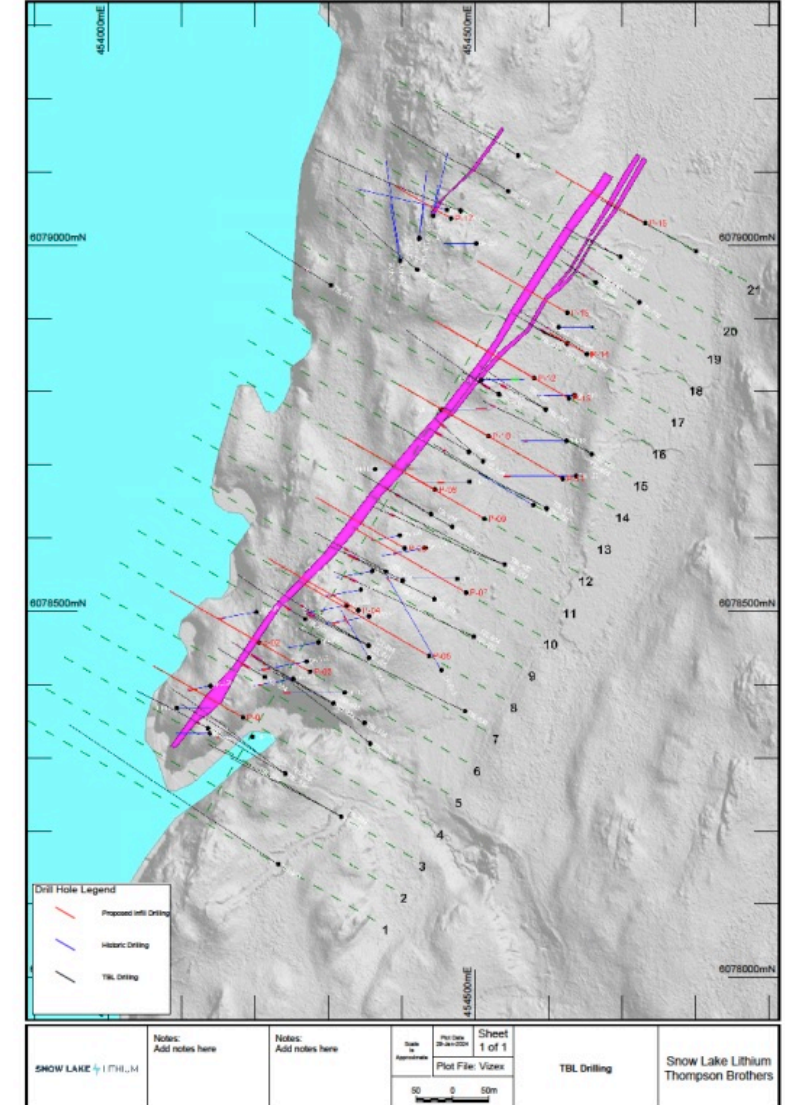
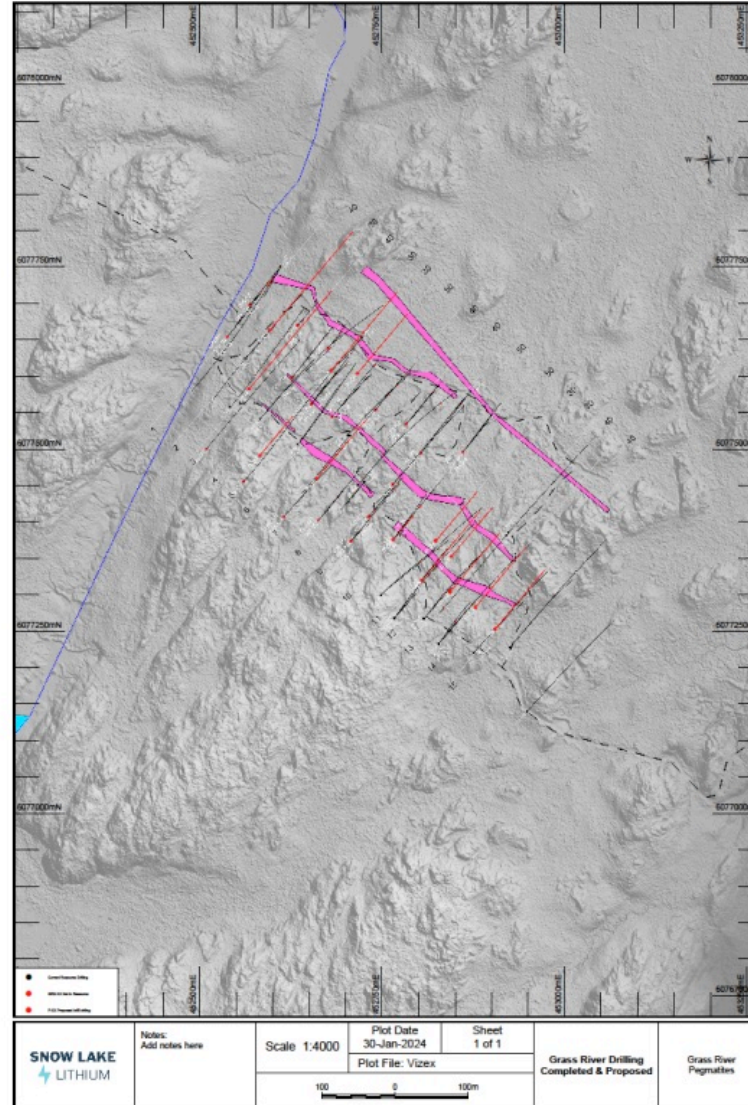
Grass River

- Proposed in-fill drill holes in red
- Drill holes not in resource in pink
- Snow Lake drill holes in red

Thompson Brothers

- Proposed drill holes in red
- Historic drill holes in blue
- Snow Lake drill holes in black

Program designed to support and upgrade resource classification, and to test extensions on both deposits



SHATFORD LAKE LITHIUM PROJECT

The Shatford Lake Lithium Project consists of the following mineral claims:

- Shatford Lake: 21 claims totalling 8,883 acres (3,595 hectares)
- Birse Lake: 10 claims totalling 5,196 acres (2,102 hectares)
- Cat-Euclid: 6 claims totalling 2,930 acres (1,186 hectares)

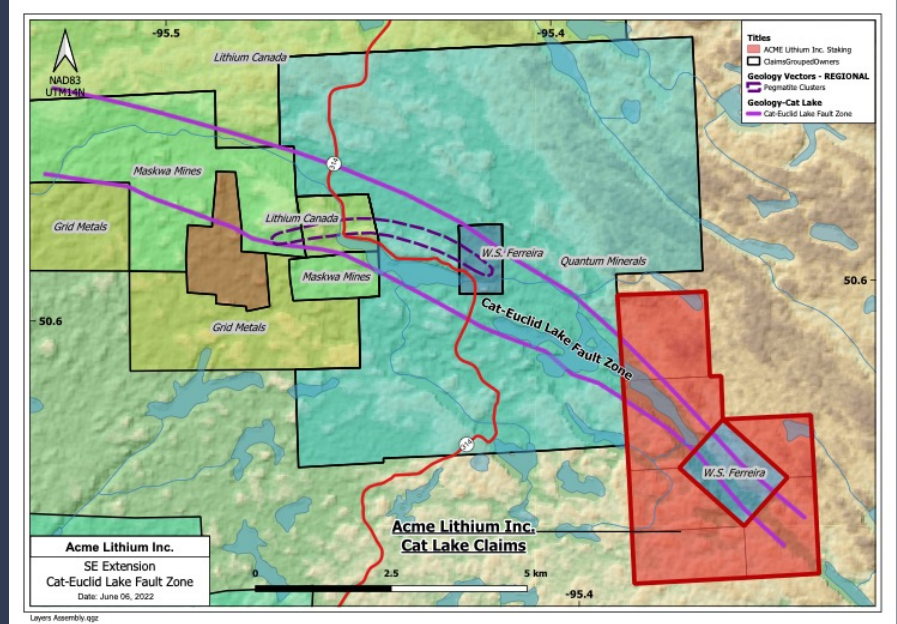
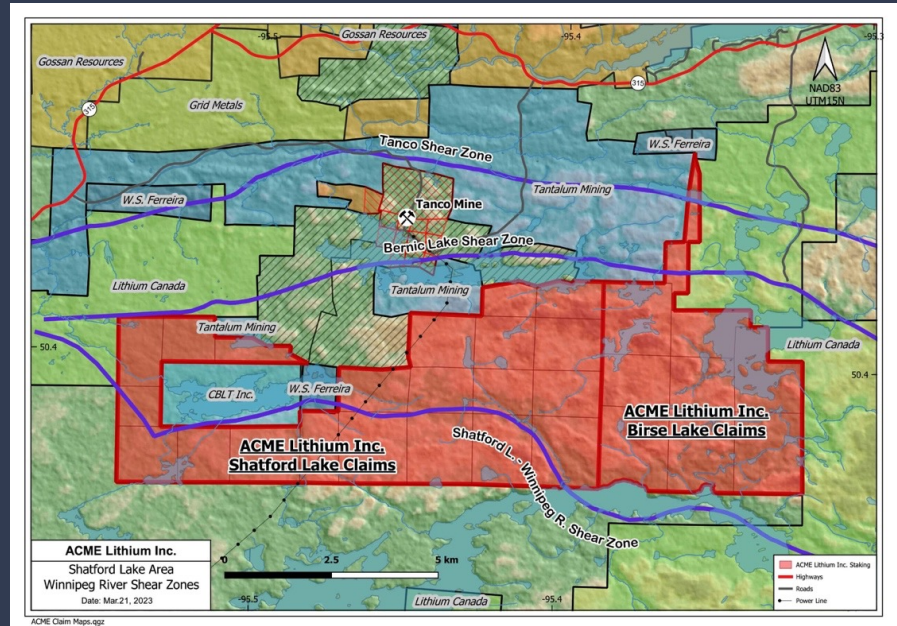
The Shatford Lake and Birse Lake mineral claims border the mineral lease of the Tanco mine in Southern Manitoba.

Snow Lake has the option to earn up to a 90% interest in the Shatford Lake Lithium Project as follows:

- First Stage Option to acquire a 51% interest in the Project upon incurring CAD\$600,000 in exploration expenditures within the next 12 months
- Second Stage Option to acquire an additional 39% interest in the Project upon incurring an additional CAD\$1,200,000 in exploration expenditures within the next 24 months
- ACME Lithium retains a 10% free-carried interest in the Project

The Shatford Lake Lithium Project straddles a 15 kilometers long structural trend of the Greer-Shatford Shear Zone with numerous pegmatite dykes and favorable host rocks. It is situated in the southern limb of the Bird River greenstone belt in southeastern Manitoba.

The region hosts hundreds of individual pegmatite bodies, many of which are classified as complex rare-element Lithium-Cesium-Tantalum (LCT) pegmatites – known to account for a quarter of the world’s lithium production.



TANCO MINE

Tantalum Mining Corporation of Canada Ltd. (“**Tanco**”) is 100% owned and operated by Sinomine (Hong Kong) Rare Metals Resource Co., and operates the Tanco mine located on the northwest shore of Bernic Lake, Lac du Bonnet, Manitoba.

The Tanco mine pegmatite orebody was discovered in the late 1920’s and the Tanco mine has been in commercial operation producing lithium in Manitoba for more than 50 years.

In addition to lithium concentrate for the lithium battery market, the Tanco mine produces cesium-based products for the North American market.



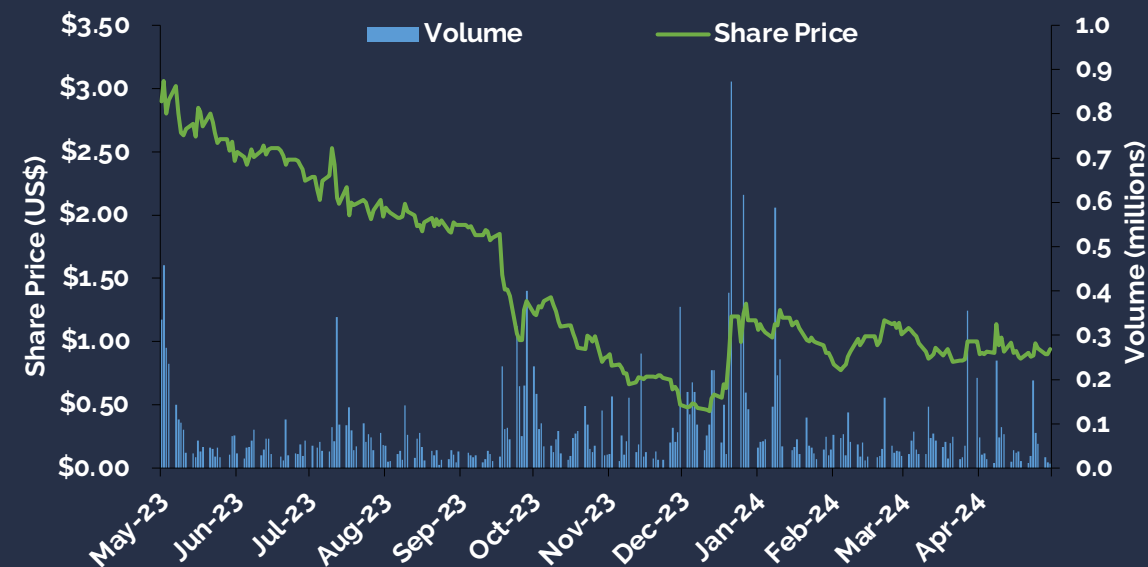
07

CORPORATE



CAPITAL STRUCTURE

Ticker	Nasdaq: LITM
Share Price (May 1, 2024)	US\$0.94
52-Week Range	US\$0.41 - US\$3.15
Shares Outstanding	20,319,789
Options¹	1,712,407
Warrants & RSUs²	2,195,054
FD Shares Outstanding	24,227,250
Market Capitalization (Basic)	US\$19.1M
Cash	US\$5M



1. 1,712,407 options outstanding with a weighted average exercise price of US\$5.18.
 2. Includes 1,525,054 warrants outstanding with a weighted average exercise price of US\$2.99 and 670,000 RSUs outstanding
 Note: Canadian dollar figures have been adjusted using a US\$:C\$ exchange rate as of May 1, 2024 of US\$0.727:C\$1.00

Source: Company reports and S&P Cap IQ for market data as of May 1, 2024

BOARD OF DIRECTORS

Nachum Labkowski

- A director since November 2018, Nachum Labkowski is currently the Chief Executive Officer and principal investor in Halevi Enterprises, a private equity firm which he founded in 2010 that holds equity in more than 30 private companies and invests in real estate worldwide
- Mr. Labkowski's unique approach to investing has provided significant returns from those companies he has invested in to date

Kathleen Skerret

- Chair of the Securities Group at Gardiner Roberts LLP, specializing in advising clients on forming, financing, maintaining and reorganizing public companies
- Has acted as a director and/or officer of numerous Canadian-listed public companies and is currently on the board of directors of the Canada's National Ballet School Foundation
- Called to the Bar in Ontario in 1996 after earning a Bachelor of Laws from the University in Toronto in 1994

Shlomo Kievman

- Extensive experience as a leader in the procurement of ideas and concepts which exemplify American innovation
- His work in public and private sectors in the USA and abroad has included business development, financial modeling, action planning, and conceptual design
- Principal of Crown Equities, an investment firm transforming the global resources sector, leading several global organizations

Brian Imrie

- Retired investment banker with +30 years of experience raising capital for companies in multiple industries
- Previously with Morgan Stanley in New York and Toronto from 1983-1997 and Credit Suisse First Boston from 1997-2001
- Previously the Chairman/owner of Debro Inc., a chemical distribution company and serves on several other public and private boards
- MBA from Harvard University in 1987

Peretz Schapiro

- Has been a global investor for more than a decade with a focus on the resources sector
- Founder and Executive Chairman of Loyal Lithium (ASX:LLI)
- Chairman of Summit Minerals (ASX:SUM)
- Previously held directorship roles at Asra Minerals Limited (ASX:ASR) and Okapi Resources (ASX:OKR)
- Holds a Masters degree in Applied Finance

MANAGEMENT

Frank Wheatley (BCom, LLB)

Chief Executive Officer

- Over 35 years of mining and resource industry experience, as a senior executive and independent director
- Extensive domestic and international experience with development and operating gold, copper and lithium companies (Talison Lithium Ltd.), including project development, project financing, environmental permitting in accordance with all international best practice and ESG standards, as well as mergers and acquisitions.

Keith Li (CPA,CA)

CFO

- Senior finance executive with over 15 years experience providing executive level financial services to public companies
- IFRS Compliant financial statements and MD&A
- Previously held senior finance roles in the mining industry at Jubilee Gold Exploration and US Critical Metals Corp
- Fluent oral and written skills in English, French & Chinese

Brian Youngs (C.Tech.)

VP Exploration

- Leading mining consultant and Field Manager with more than 20 years experience specialising in new mining operations
- 10 years as a senior airborne geophysics technician with Geotech Ltd
- Board member at Gamet Gold and lead technical advisor to Temagami Gold Inc. (Progenitor Metals)
- Member of Ontario Association of Certified Engineering Technicians and Technologists

CONTACT US

Frank Wheatley

Chief Executive Officer

+1 (604) 562-1916

fw@snowlakelithium.com



info@SnowLakeLithium



[linkedin.com/company/snow-lake-resources/](https://www.linkedin.com/company/snow-lake-resources/)



www.snowlakelithium.com